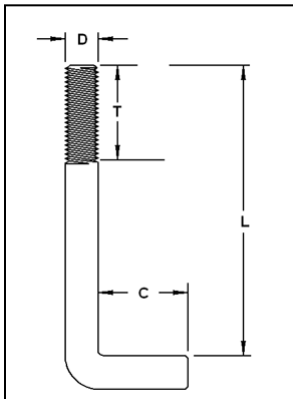


### 2006 IRC Section R403.1.6 Foundation anchorage.

1/2" (or larger) diameter anchor bolts embedded 7" minimum spaced 6 feet on center maximum or approved anchorage devices are required.

#### NOTES:

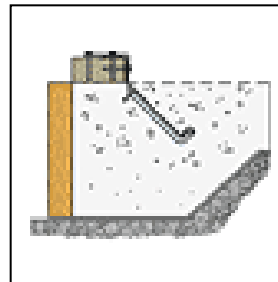
1. Anchor bolts must be placed within 12" of each wall corner and all sill plate splices at a minimum 3 1/2" from the edge.
2. Maximum spacing of bolts is 6'-0".
3. Bolts must be 1/2" diameter minimum size with washers.
4. Right angle bend anchor bolts must have 7" embedment.
5. Alternate anchor bolts and anchor straps may be used and must be installed per manufacturer's instructions and may require engineer's approval.



Right Angle Bend Anchor Bolt



Alternate Engineered Anchor Bolts



Alternate engineered anchor strap